



RODZIME SMAKI

znane i lubiane



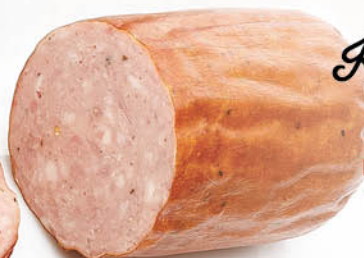
*Kielbasa
dobra*

1,0 KG  MAP



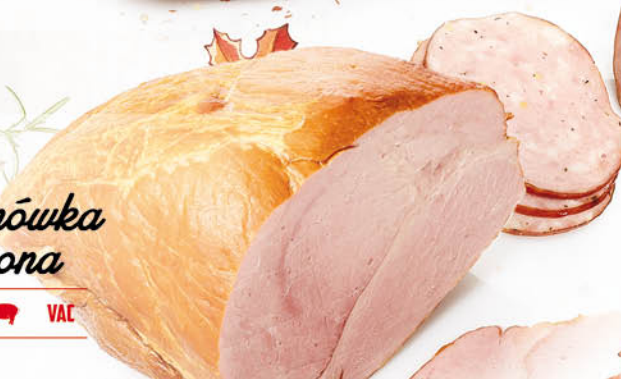
*Kielbasa
piwna*

0,8 KG  MAP



*Ogonówka
wędzona*

1,4 KG  VAC



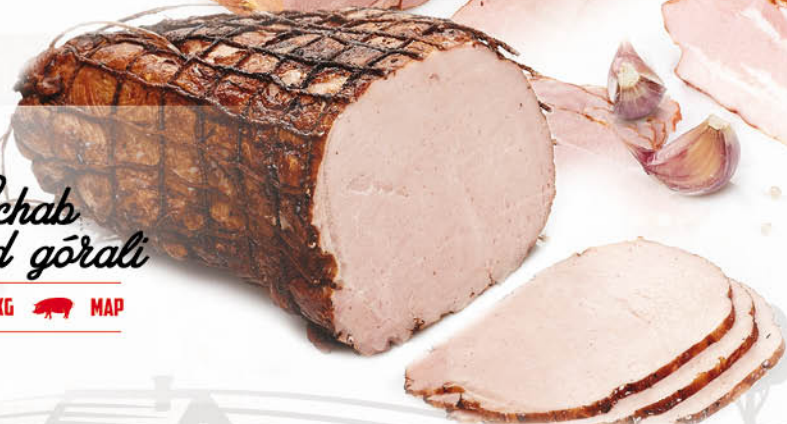
*Paski
boczkowe*

1,5 KG  MAP



*Schab
od górali*

2,0 KG  MAP





Kiełbasa cygańska

0,6 KG   MAP



Szynka cygańska

1,5 KG  VAC



Poledwica sopocka drobiowa

1,4 KG  MAP



Salami rodzinne

2,0 KG  MAP



Szynka z komina

1,5 KG  VAC

